



THE WIMBLEDON EXPERIENCE

OFFICIAL TOURS PROVIDED BY KEITH PROWSE

ВИКИТРЕВЕЛ +7 (495) 989-43-88 HOTEL@VIKITRAVEL.RU

The Championships Wimbledon 2013

MONDAY 24 JUNE - SUNDAY 7 JULY



Индивидуальные и групповые экскурсионные туры в Англию-Шотландию-Уэльс. Каникулярные образовательные программы для школьников и студентов. Корпоративные мероприятия в Лондоне и Шотландии. Футбольные туры на Королевскую Премьер Лигу Англии. Визовая поддержка в UK!

(495) 989-43-88, 979-31-39 • www.vikitravel.ru • visa@vikitravel.ru





THE WIMBLEDON EXPERIENCE

OFFICIAL TOURS PROVIDED BY KEITH PROWSE

ВИКИТРЕВЕЛ +7 (495) 989-43-88 HOTEL@VIKITRAVEL.RU



WELCOME TO WIMBLEDON !

This publication has been designed to give you a general guide to The Championships, Wimbledon.

Witness the uninterrupted action with the ultimate Wimbledon hospitality at both The Wimbledon Experience and The Gatsby Club.

We hope that you find this guide useful. It should answer many of the questions you or your guests may have.

We are sure that you will have a wonderful day at The Championships and we look forward to welcoming you on your chosen day.

Best wishes

Andy Vinsen
Commerical Director

CONTENTS

1	Welcome & Contents
2-3	Package details
4-5	Sample Itineraries
6-7	Menu
8	Schedule of Play
9	The Wimbledon Experience
10	The Gatsby Club
11-18	Hotel Information
19	Private Chauffeur Information
20-22	Extras
23	Travel Information
24-25	Frequently Asked Questions
26	2011 Facts
27-30	Map of Courts
31-33	A-Z of Wimbledon
34	Contact Details



Индивидуальные и групповые экскурсионные туры в Англию-Шотландию-Уэльс. Каникулярные образовательные программы для школьников и студентов. Корпоративные мероприятия в Лондоне и Шотландии. Футбольные туры на Королевскую Премьер Лигу Англии. Визовая поддержка в УК!

(495) 989-43-88, 979-31-39 • www.vikitavel.ru • visa@vikitavel.ru





THE WIMBLEDON EXPERIENCE

PACKAGE DETAILS

ВИКИТРЕВЕЛ +7 (495) 989-43-88 HOTEL@VIKITRAVEL.RU



BASELINE TOUR PACKAGE DETAILS*

- Reserved seat for one day at The Championships, on Centre Court, No. 1 Court or No. 2 Court for your choice of date from Monday 24 June – Tuesday 2 July
- One night accommodation in a London hotel, sharing a twin/double bedroom, with full English breakfast daily (additional nights available upon request). Please note there will be a supplement for single rooms
- Return transfers from Southfields Underground Station to The Wimbledon Experience via the shuttle bus
- Information pack containing: one day London Travelcard, itinerary, event card, event wallet and travel information
- Wimbledon gift voucher for the shop and official Wimbledon programme
- Admission to the Wimbledon Lawn Tennis Museum
- Admission to The Wimbledon Experience for ticket collection, complimentary tea, coffee and Danish pastries
- Televisions to keep guests informed of play
- Air-conditioning
- Keith Prowse Event Team in attendance throughout the day

*Please note that your event documentation will be available at reception upon check in at the hotel

CHAMPIONSHIPS TOUR PACKAGE DETAILS

- Reserved seat for two days at The Championships on Centre Court and No.1 Court (1 per each day)
- Three nights accommodation in a London hotel, sharing a twin/double bedroom, with full English breakfast daily (additional nights available upon request). Please note there will be a supplement for single rooms
- Return transfers from Southfields Underground Station to The Wimbledon Experience via the shuttle bus
- Information pack containing: two London Travelcards, itinerary, event card, event wallet and travel information
- Wimbledon gift voucher and official Wimbledon programme
- Admission to the Wimbledon Lawn Tennis Museum
- Admission to The Wimbledon Experience for ticket collection, complimentary tea, coffee and Danish pastries
- You are invited to The Wimbledon Experience for a buffet lunch on both days to include beer, wine, soft drinks and dessert
- Televisions to keep guests informed of play
- Air-conditioning
- Keith Prowse Event Team in attendance throughout the day



Индивидуальные и групповые экскурсионные туры в Англию-Шотландию-Уэльс. Каникулярные образовательные программы для школьников и студентов. Корпоративные мероприятия в Лондоне и Шотландии. Футбольные туры на Королевскую Премьер Лигу Англии. Визовая поддержка в UK!

(495) 989-43-88, 979-31-39 • www.vikitravel.ru • visa@vikitravel.ru





THE WIMBLEDON EXPERIENCE

PACKAGE DETAILS

ВИКИТРЕВЕЛ +7 (495) 989-43-88 HOTEL@VIKITRAVEL.RU



SEMI-FINALS & FINALS TOUR PACKAGE DETAILS

- Reserved Centre Court seat for two days at The Championships:
Semi-Finals Tour: Thursday 4 July - Ladies' Semi-Final
Friday 5 July - Men's Semi-Final
Finals Tour: Saturday 6 July - Ladies' Final
Sunday 7 July - Men's Final
- Exclusive membership to The Gatsby Club for two days. VIP hospitality including a 3-choice, 3-course menu designed by Albert Roux, with a choice of specially selected wines, traditional Wimbledon afternoon tea and a complimentary bar including champagne throughout the day
- Three nights accommodation in a London hotel, sharing a twin/double bedroom, with full English breakfast daily (please note there will be a supplement for single rooms)
- Information pack containing an itinerary, event card, event wallet, 2 London Travelcards and hotel information
- Return transfers from Southfields Underground Station to The Gatsby Club via the shuttle bus
- Wimbledon gift voucher and official Wimbledon programme
- Admission to the Wimbledon Lawn Tennis Museum
- Air-conditioning, televisions to keep guests informed of play and newspapers available upon request
- Keith Prowse event team in attendance throughout the day

VIP TOUR PACKAGE DETAILS

- Reserved seat for one day at The Championships, on Centre Court for your choice of date from Monday 24 June – Sunday 7 July
- One night accommodation at a 4* or 5* London hotel with full English breakfast (based on 2 people sharing a twin/double bedroom). Please note there will be a supplement for single rooms
- Entry to The Gatsby Club, situated opposite the main entrance to The Championships
- Champagne reception
- Complimentary bar, including champagne
- VIP hospitality including a 3-choice, 3-course menu designed by Albert Roux, with a choice of specially selected wines
- Traditional Wimbledon afternoon tea with strawberries and cream
- London Travelcard for the day
- Admission to the Wimbledon Lawn Tennis Museum
- Television screens to keep guests informed of play
- Air-conditioning
- Official Wimbledon programme
- Keith Prowse Event Team in attendance throughout the day



Индивидуальные и групповые экскурсионные туры в Англию-Шотландию-Уэльс. Каникулярные образовательные программы для школьников и студентов. Корпоративные мероприятия в Лондоне и Шотландии. Футбольные туры на Королевскую Премьер Лигу Англии. Визовая поддержка в UK!

(495) 989-43-88, 979-31-39 • www.vikitravel.ru • visa@vikitravel.ru





THE WIMBLEDON EXPERIENCE

ITINERARY

ВИКИТРЕВЕЛ +7 (495) 989-43-88 HOTEL@VIKITRAVEL.RU



SAMPLE ITINERARY

The Wimbledon Experience Monday 24 June - Thursday 4 July

9.30am	Underground Travelcard is valid for travel (zones 1-4)
10.00am - 1.00pm	The complimentary 'The Wimbledon Experience' shuttle bus service runs from Southfields Underground station
10.30am	The Wimbledon Experience opens You will be presented with your court ticket upon arrival at reception Tea, coffee and pastries will be served The gates to The Championships, Wimbledon open
10.30am - 8.00pm	The Wimbledon Lawn Tennis Museum is open
11.30am	Buffet lunch is served (for Championship Tours only)
11.30pm*	Play commences on No. 2 and all outside courts
1.00pm*	Play commences on Centre Court and No. 1 Court
2.30pm	The Wimbledon Experience closes
4.00pm	The Wimbledon Experience reopens
4.00pm - 6.00pm	Afternoon tea available (must be pre-purchased**) Cash bar available
5.00pm - 7.00pm	The complimentary 'The Wimbledon Experience' shuttle bus service runs to Southfields Underground Station
7.00pm	The Wimbledon Experience closes

*Subject to change please check press for details of start times - (Finals commence at 2.00pm)

** Please note that Afternoon tea will need to be pre-ordered at least 5 days prior to your attendance.



Индивидуальные и групповые экскурсионные туры в Англию-Шотландию-Уэльс. Каникулярные образовательные программы для школьников и студентов. Корпоративные мероприятия в Лондоне и Шотландии. Футбольные туры на Королевскую Премьер Лигу Англии. Визовая поддержка в УК!

(495) 989-43-88, 979-31-39 • www.vikitravel.ru • visa@vikitravel.ru

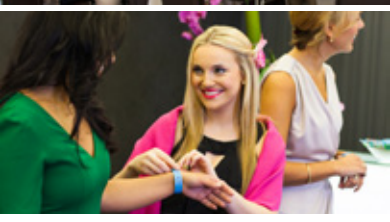




THE WIMBLEDON EXPERIENCE

PACKAGE DETAILS

ВИКИТРЕВЕЛ +7 (495) 989-43-88 HOTEL@VIKITRAVEL.RU



SAMPLE ITINERARY

The Gatsby Club

Monday 24 June - Sunday 7 July

9.30am	Underground Travelcard is valid for travel (zones 1-4)
10.00am	The complimentary 'The Gatsby Club' shuttle bus service from Southfields Underground station starts
10.30am	The Gatsby Club opens The gates to The Championships, Wimbledon open
11.00am	Enjoy a glass of champagne at your table
11.30am - onwards	Lunch will be served with specially selected wines and a choice of liqueurs Your match ticket will be presented to you during lunch
11.30*	Play commences on No 2 and all outside Courts
1.00pm	Play commences on Centre Court*
4.00pm - 6.00pm	Traditional afternoon tea is served
7.00pm	The Gatsby Club closes The complimentary 'The Gatsby Club' shuttle bus service to Southfields Underground Station stops

*Subject to change please check press for details of start times – (Finals commence at 2.00pm)



Индивидуальные и групповые экскурсионные туры в Англию-Шотландию-Уэльс. Каникулярные образовательные программы для школьников и студентов. Корпоративные мероприятия в Лондоне и Шотландии. Футбольные туры на Королевскую Премьер Лигу Англии. Визовая поддержка в UK!

(495) 989-43-88, 979-31-39 • www.vikitavel.ru • visa@vikitavel.ru





THE WIMBLEDON EXPERIENCE

MENU

ВИКИТРЕВЕЛ +7 (495) 989-43-88 HOTEL@VIKITRAVEL.RU



SAMPLE MENU FROM 2012 THE WIMBLEDON EXPERIENCE

Hot Buffet*

BEEF TAGINE

PAN FRIED CHICKEN WITH WILD MUSHROOMS
AND TARRAGON SAUCE

served with braised rice or roasted new potatoes

Cold Buffet*

CORONATION STYLE CHICKEN
with toasted almond and apricot

GLAZED WEST COUNTRY BACON LOIN
with spiced redcurrant compote

PEA, MINT & RICOTTA TART

WONTON STYLE SAVOURY RICE PARCELS

Salads

YELLOW CHERRY AND PLUM TOMATO
with basil and baby mozzarella

FRENCH, SOY & KIDNEY BEAN
with tomato salsa

CONCHIGLIE PASTA, RICH TOMATO & BASIL SAUCE
with parmesan

CUCUMBER, BABY GEM & MINT
with white balsamic syrup

SELECTION OF BREADS

Desserts

KENTISH STRAWBERRIES & BLUEBERRIES
with cream

PASSION FRUIT CHEESECAKE

Please note that this menu is subject to change.

*The hot and cold buffet items are rotated daily



Индивидуальные и групповые экскурсионные туры в Англию-Шотландию-Уэльс. Каникулярные образовательные программы для школьников и студентов. Корпоративные мероприятия в Лондоне и Шотландии. Футбольные туры на Королевскую Премьер Лигу Англии. Визовая поддержка в UK!

(495) 989-43-88, 979-31-39 • www.vikitravel.ru • visa@vikitravel.ru





THE WIMBLEDON EXPERIENCE

MENU

ВИКИТРЕВЕЛ +7 (495) 989-43-88 HOTEL@VIKITRAVEL.RU



SAMPLE MENU FROM 2012 THE GATSBY CLUB

Starters

CREAM OF SUGAR SNAP SOUP

with organic smoked salmon & crème fraiche

SEARED SCALLOPS, PEA PUREE, PEA SHOOTS

with white wine butter sauce

ENGLISH GREEN ASPARAGUS (V)

with goats cheese croquettes, trompette mushrooms & truffle jus dressing

POACHED GOOSNARGH BREAST OF DUCK

with cherry chutney salad & palm heart

Main Courses

ROASTED FILLET OF CUMBRIAN BEEF

with fondant potatoes, asparagus & spinach royale & port wine sauce

BALLOTINE OF FREE RANGE CHICKEN

with ratatouille stuffed tomato and tarragon whole grain mustard sauce

RISOTTO PRIMAVERA (V)

with pine nuts and Parmesan cheese

FRUITS DE MER

with lobster, winkles, oysters, prawns, clams, whelks, seaweed, lemon garnish, Tabasco, red wine shallot vinegar, sauce bois boudran and cocktail sauce

Desserts



ALBERT ROUX'S CARAMELISED LEMON TART

with fresh raspberries

RICH CHOCOLATE TERRINE

with vanilla custard, brandy snap & white chocolate sorbet

VANILLA CHIBOUST

with Kent strawberries and wild strawberry coulis

ASSIETTE OF CONTINENTAL CHEESES

Beaufort Alpage with tomato chutney

Charollais with rhubarb chutney

Persille du Beaujolais with prune & apple chutney

Please note that this menu is subject to change.



Индивидуальные и групповые экскурсионные туры в Англию-Шотландию-Уэльс. Каникулярные образовательные программы для школьников и студентов. Корпоративные мероприятия в Лондоне и Шотландии. Футбольные туры на Королевскую Премьер Лигу Англии. Визовая поддержка в UK!

(495) 989-43-88, 979-31-39 • www.vikitravel.ru • visa@vikitravel.ru





THE WIMBLEDON EXPERIENCE

PROVISIONAL SCHEDULE OF PLAY

ВИКИТРЕВЕЛ +7 (495) 989-43-88 HOTEL@VIKITRAVEL.RU

PROVISIONAL SCHEDULE OF PLAY

Date	Provisional Schedule of Play
Monday 24 June	Men's Singles Champion opens play on Centre Court*
Tuesday 25 June	Ladies' Singles Champion opens play on Centre Court*
Wednesday 26 June	Men's Singles, Ladies' Singles, Men's Doubles, Ladies' Doubles and Mixed Doubles play*
Thursday 27 June	
Friday 28 June	
Saturday 29 June	
Monday 1 July	
Tuesday 2 July	Ladies' Singles Quarter-finals*
Wednesday 3 July	Men's Singles Quarter-finals*
Thursday 4 July	Ladies' Singles Semi-finals, Men's Doubles Quarter-finals, Ladies' Doubles Quarter-finals and Mixed Doubles Quarter-finals*
Friday 5 July	Men's Singles Semi-finals, Ladies Doubles Semi-finals, Men's Double Semi-finals and Mixed Doubles Semi-finals*
Saturday 6 July	Ladies' Singles Final, Men's Doubles Final and Ladies Doubles Final*
Sunday 7 July	Men's Singles Final and Mixed Doubles Final*

Please note that we have no control whatsoever over decisions made by The AELTC (Wimbledon), as to the scheduling of matches either on the day, or deferred to another day/court, and therefore cannot be held responsible for any liability arising from their decisions.

Every endeavour is made to ensure that all the information in this factsheet is correct at time of going to press. However package, price and content are subject to change. *Please note this tour is strictly for the overseas market.



Индивидуальные и групповые экскурсионные туры в Англию-Шотландию-Уэльс. Каникулярные образовательные программы для школьников и студентов. Корпоративные мероприятия в Лондоне и Шотландии. Футбольные туры на Королевскую Премьер Лигу Англии. Визовая поддержка в UK!

(495) 989-43-88, 979-31-39 • www.vikitravel.ru • visa@vikitravel.ru





THE WIMBLEDON EXPERIENCE

THE WIMBLEDON EXPERIENCE

ВИКИТРЕВЕЛ +7 (495) 989-43-88 HOTEL@VIKITRAVEL.RU



THE WIMBLEDON EXPERIENCE

Situated in a prime location opposite the main entrance to The Championships makes The Wimbledon Experience the perfect informal hospitality. The Wimbledon Experience is sure to wow guests with its recently refurbished new look this year. Each guest can experience the magic of Wimbledon from the moment they walk through the door, with the vibrant atmosphere and the fun zone where guests can have their picture taken along side a past champion.



Индивидуальные и групповые экскурсионные туры в Англию-Шотландию-Уэльс. Каникулярные образовательные программы для школьников и студентов. Корпоративные мероприятия в Лондоне и Шотландии. Футбольные туры на Королевскую Премьер Лигу Англии. Визовая поддержка в UK!

(495) 989-43-88, 979-31-39 • www.vikitravel.ru • visa@vikitravel.ru





THE WIMBLEDON EXPERIENCE

THE GATSBY CLUB

ВИКИТРЕВЕЛ +7 (495) 989-43-88 HOTEL@VIKITRAVEL.RU

The Gatsby Club



THE GATSBY CLUB

The Gatsby Club's new modern and chic look makes it the perfect place to entertain during The Championships. In this luxurious restaurant you can relax from the moment you walk in the door, as we have everything in hand. Situated opposite the main gate, it ensures that there is only a short stroll to your seats guaranteeing that you catch all the day's action. The VIP Tour, Semi-Finals and Finals Tour will be housed within The Gatsby Club.



Индивидуальные и групповые экскурсионные туры в Англию-Шотландию-Уэльс. Каникулярные образовательные программы для школьников и студентов. Корпоративные мероприятия в Лондоне и Шотландии. Футбольные туры на Королевскую Премьер Лигу Англии. Визовая поддержка в UK!

(495) 989-43-88, 979-31-39 • www.vikitravel.ru • visa@vikitravel.ru

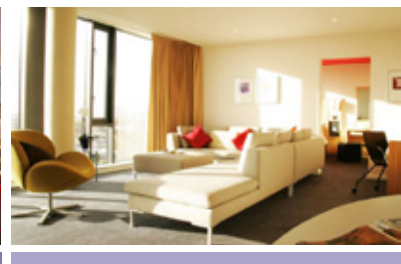
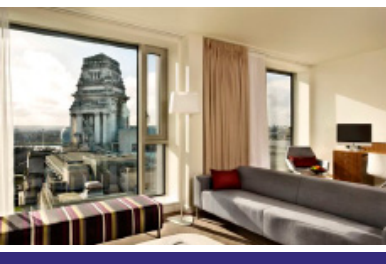




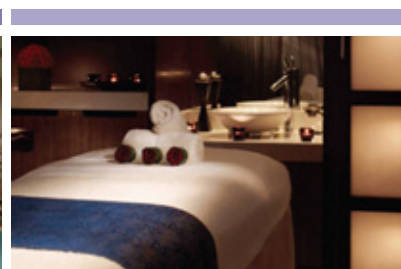
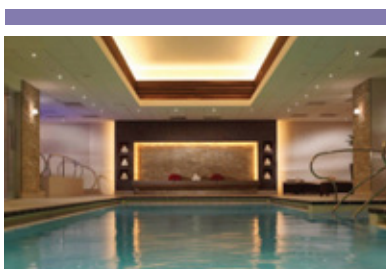
THE WIMBLEDON EXPERIENCE

HOTEL INFORMATION

ВИКИТРЕВЕЛ +7 (495) 989-43-88 HOTEL@VIKITRAVEL.RU



HOTEL INFORMATION



Индивидуальные и групповые экскурсионные туры в Англию-Шотландию-Уэльс. Каникулярные образовательные программы для школьников и студентов. Корпоративные мероприятия в Лондоне и Шотландии. Футбольные туры на Королевскую Премьер Лигу Англии. Визовая поддержка в UK!

(495) 989-43-88, 979-31-39 • www.vikitravel.ru • visa@vikitravel.ru





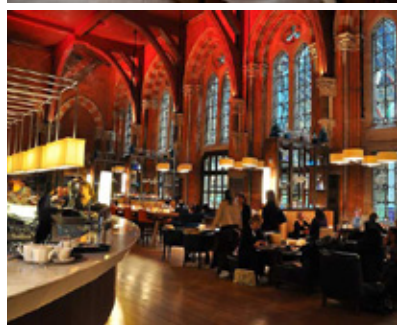
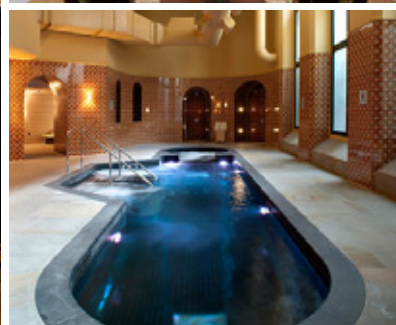
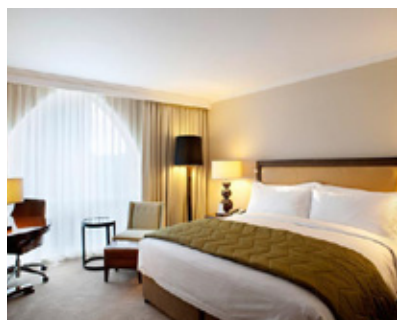
THE WIMBLEDON EXPERIENCE

SUPERIOR HOTEL

ВИКИТРЕВЕЛ +7 (495) 989-43-88 HOTEL@VIKITRAVEL.RU

Superior Hotel The St.Pancras Renaissance Hotel

★★★★★



THE ST.PANCRAS RENAISSANCE HOTEL BY MARRIOTT EUSTON ROAD LONDON NW1 2AR

We are delighted to welcome you to the five-star St.Pancras Renaissance Hotel, a London icon and a model of modern hospitality that blends Victorian splendour with contemporary style and service.

The St.Pancras Renaissance Hotel's 245 luxury guest rooms are designed specifically for your comfort and the hotel is home to the Gilbert Scott Restaurant, where you will find Michelin starred brasserie cuisine from British food icon Marcus Wareing.

The St.Pancras Renaissance's convenient location in central London makes it the perfect place, suitable for any occasion and any taste in one of our eclectic restaurants or bars.

Nearest underground station:

Kings Cross St.Pancras on the Piccadilly line (Dark Blue) – the station adjoins the hotel.

Edgware Road Tube Station is only a short distance away from the hotel with direct links to Southfields Underground Station.

Your Room

Featuring a King size bed, a deep bath and shower as well as the latest amenities.

Room Features

- Free access to the fitness suite, pool, sauna & steam room
- Lighted makeup mirror
- Two telephones
- 37" digital TV with international cable/satellite channels
- Hair dryer
- Radio
- Air conditioning
- Free, high speed Wi-Fi
- 300 thread count Egyptian cotton linens

Hotel check in / check out times

16:00 hrs / 12:00 hrs

These rooms are Barlow standard category, if you would like an upgrade to a different category of room, please note this in your booking form under Special requirements, this will incur an additional cost. All hotels are subject to availability.



Индивидуальные и групповые экскурсионные туры в Англию-Шотландию-Уэльс. Каникулярные образовательные программы для школьников и студентов. Корпоративные мероприятия в Лондоне и Шотландии. Футбольные туры на Королевскую Премьер Лигу Англии. Визовая поддержка в UK!

(495) 989-43-88, 979-31-39 • www.vikitravel.ru • visa@vikitravel.ru





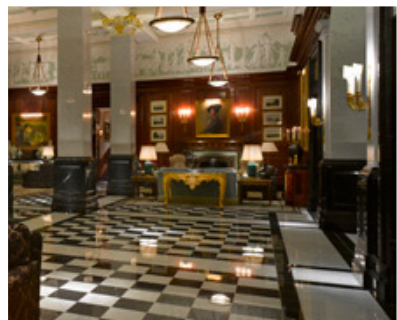
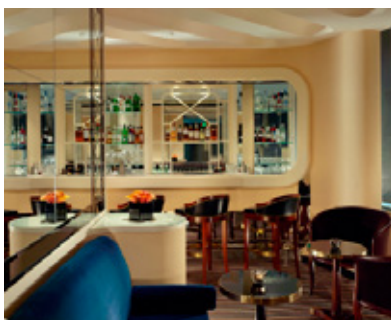
THE WIMBLEDON EXPERIENCE

SUPERIOR HOTEL

ВИКИТРЕВЕЛ +7 (495) 989-43-88 HOTEL@VIKITRAVEL.RU

Superior Hotel The Savoy

★★★★★



THE SAVOY STRAND LONDON WC2R 0EU

A British icon since 1889, The Savoy has once again taken its place on the world stage after over a £220 million restoration in 2010.

The hotel seamlessly blends elements of the original and the new while the stunning English Edwardian and Art Deco interiors sparkle with timeless elegance and glamour.

The 268 guestrooms and suites are the last word in style, luxury and discreet technology with stunning views of London and the River Thames. Nine 'signature suites' have been styled after some of The Savoy's most high profile guests while a newly created 2-bedroom Royal Suite is truly a suite fit for a King.

Nearest underground station:

Embankment on the District Line (Green line) - 2 minute walk from the hotel rooms.

Your Room

The Savoy superior rooms are the perfect place to stay in the heart of London with its exquisite decor. Decorated in either Edwardian or Art Deco style, they quietly overlook the courtyard or the city.

Room Features

- Elegant, comfortable room
- Bathrooms are spacious and offer The Savoy's famous rain showerheads and signature toiletries by Miller Harris
- Personal bar
- Loewe flat-screen television,
- Vita Audio ipod docking station
- Bespoke Savoy furnishings

Hotel check in / check out times

14:00 hrs / 12:00 hrs

These rooms are Superior rooms, if you would like an upgrade to Deluxe rooms, please note this in your booking form under Special requirements, this will incur an additional cost. All hotels are subject to availability.



Индивидуальные и групповые экскурсионные туры в Англию-Шотландию-Уэльс. Каникулярные образовательные программы для школьников и студентов. Корпоративные мероприятия в Лондоне и Шотландии. Футбольные туры на Королевскую Премьер Лигу Англии. Визовая поддержка в UK!

(495) 989-43-88, 979-31-39 • www.vikitravel.ru • visa@vikitravel.ru





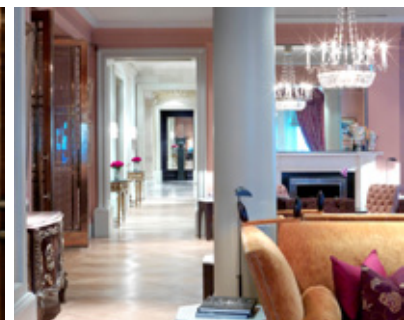
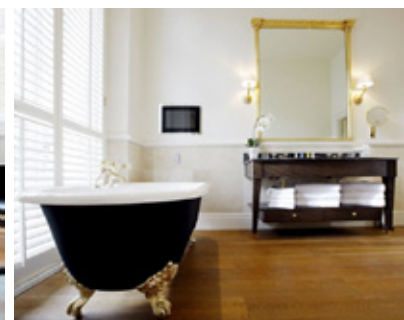
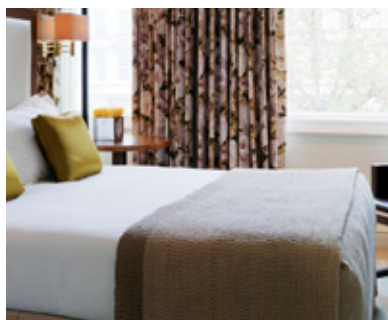
THE WIMBLEDON EXPERIENCE

DELUXE HOTEL

ВИКИТРЕВЕЛ +7 (495) 989-43-88 HOTEL@VIKITRAVEL.RU

Deluxe Hotel The Kensington Doyle Hotel

★★★★



THE KENSINGTON DOYLE HOTEL 109-113 QUEEN'S GATE LONDON SW7 5LR

The Kensington Doyle Hotel is a deluxe 4-star London hotel. Recently re-opened after a £20m renovation programme, The Kensington Hotel welcomes guests to the jewel of London's regency quarter.

149 stylish guest rooms welcome you with internet access and pay movies. The Aubrey Restaurant features food from Michelin-starred international chef John Wood or you can relax with a cocktail in the exquisitely decorated Aubrey Bar.

For that added touch of relaxation, the fitness centre is complemented by a spa and treatment rooms.

Nearest underground station:

South Kensington or Gloucester Road on the District line direct to Southfields Underground Station - 5 minute walk to/from hotel.

Your Room

Choose comfort and space with this modern room with a Queen bed along with many other features.

Room Features

- En suite bath or shower
- Work area
- 37" LCD TV with pay movies
- Complimentary wireless internet access
- Hair dryer
- Iron
- Safe
- Tea / coffee
- Mini-bar
- Aromatherapy Associates bathroom products

Hotel check in / check out times

14:00 hrs / 12:00 hrs

The rooms included are superior rooms, if you would like an upgrade to a different category of room, please note this in your booking form under Special requirements. Please note that standard rooms do not all have a bath.
All hotels are subject to availability.



Индивидуальные и групповые экскурсионные туры в Англию-Шотландию-Уэльс. Каникулярные образовательные программы для школьников и студентов. Корпоративные мероприятия в Лондоне и Шотландии. Футбольные туры на Королевскую Премьер Лигу Англии. Визовая поддержка в UK!

(495) 989-43-88, 979-31-39 • www.vikitravel.ru • visa@vikitravel.ru





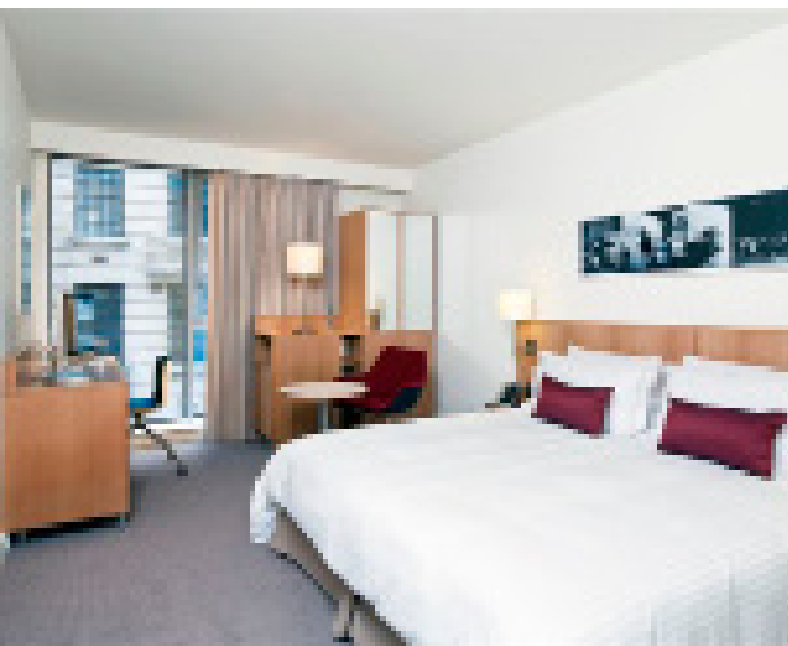
THE WIMBLEDON EXPERIENCE

DELUXE HOTEL

ВИКИТРЕВЕЛ +7 (495) 989-43-88 HOTEL@VIKITRAVEL.RU

Deluxe Hotel DoubleTree by Hilton, Tower of London

★★★★



DOUBLETREE BY HILTON, TOWER OF LONDON 7 PEPYS STREET CITY OF LONDON LONDON EC3N 4AF

DoubleTree by Hilton - Tower of London has been designed to engage with its historic surroundings and blend seamlessly within the city landscape. The hotel locations are deliberately selected close to water and transport connections and for their proximity to the city's best-loved attractions where arts and culture thrive.

On the doorstep of the DoubleTree Hilton Tower of London you'll find the Tower of London and Tower Bridge, Barbican, The Globe Theatre, The Whitechapel Art Gallery and St Paul's Cathedral, making it an ideal location to explore all that London, as a destination, has to offer.

Nearest underground station:

Tower Hill station on the District & Circle lines - 5 minute walk to hotel. From Tower Hill tube station, turn right with the Tower of London on your left, up either Cooper's Row or Trinity Square towards Pepys Street.

Your Room

Each bedroom is individually styled and contains personalised works of art.

Room Features

- Apple iMac TV and free high-speed Wi-Fi access
- Air-conditioning
- Luxury White Company toiletries
- Pillow Menu including anti-allergy pillows
- Iron/Ironing boards and hairdryers in every room

Hotel check in / check out times

15:00 hrs / 12:00 hrs

The rooms included are standard rooms, if you would like an upgrade to a different category of room, please note this in your booking form under Special requirements. Please note that standard rooms do not have a bath.

All hotels are subject to availability.



Индивидуальные и групповые экскурсионные туры в Англию-Шотландию-Уэльс. Каникулярные образовательные программы для школьников и студентов. Корпоративные мероприятия в Лондоне и Шотландии. Футбольные туры на Королевскую Премьер Лигу Англии. Визовая поддержка в UK!

(495) 989-43-88, 979-31-39 • www.vikitravel.ru • visa@vikitravel.ru



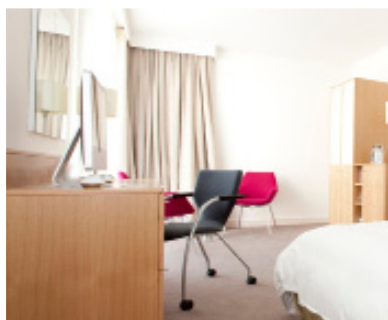


THE WIMBLEDON EXPERIENCE

DELUXE HOTEL

ВИКИТРЕВЕЛ +7 (495) 989-43-88 HOTEL@VIKITRAVEL.RU

Deluxe Hotel DoubleTree by Hilton, London Westminster ★★★★



DOUBLETREE BY HILTON WESTMINSTER 30 JOHN ISLIP STREET LONDON, SW1P 4DD

Covering 13 floors, this award-winning hotel has a total of 460 rooms. This hotel is situated at the heart of London, easily reached from all directions. It is located close to Westminster and the Houses of Parliament.

This attractive hotel offers guests a foyer area with 24 hour reception desk, a safe, a currency exchange desk, a cloakroom and lifts. There is also a small supermarket, several shops, a TV room and a conference room.

Dining options include a critically acclaimed air-conditioned restaurant with an alfresco terrace and sumptuous cocktails as well as a modern tapas bar. Guests may also use the hotel's indoor sauna and gym.

Nearest underground station:

Pimlico Tube station (on the Victoria Line) is the closest tube at just 5 minutes walk away. Westminster Tube station (on District and Circle Lines) is just 10 minutes walk.

Your Room

Each bedroom is individually styled and contains personalised works of art.

Room Features

- Apple iMac TV and free high-speed Wi-Fi access
- Air-conditioning
- Luxury White Company toiletries
- Pillow Menu including anti-allergy pillows
- Iron/Ironing boards and hairdryers in every room

Hotel check in / check out times

15:00 hrs / 12:00 hrs

The rooms included are standard rooms, if you would like an upgrade to a different category of room, please note this in your booking form under Special requirements. Please note that standard rooms do not have a bath.

All hotels are subject to availability.



Индивидуальные и групповые экскурсионные туры в Англию-Шотландию-Уэльс. Каникулярные образовательные программы для школьников и студентов. Корпоративные мероприятия в Лондоне и Шотландии. Футбольные туры на Королевскую Премьер Лигу Англии. Визовая поддержка в UK!

(495) 989-43-88, 979-31-39 • www.vikitravel.ru • visa@vikitravel.ru





THE WIMBLEDON EXPERIENCE

STANDARD HOTEL

ВИКИТРЕВЕЛ +7 (495) 989-43-88 HOTEL@VIKITRAVEL.RU

Standard Hotel Ibis London Earls Court

★★★



IBIS LONDON EARLS COURT 47 LILLIE ROAD LONDON SW6 1UD

The Ibis is located very close to Earls Court Exhibition Centre and only a short distance from Olympia. Transport is within easy access as West Brompton Tube station is 2 minutes away and Earls Court is 5 minutes away whilst there is easy access to the West End via either the underground or bus route.

A bright, spacious, modern and comfortable hotel, the bedrooms are well equipped and provide for both the business and leisure traveller.

La table Restaurant serves French and international favourites, and the bar is open for coffee or a glass of wine.

Nearest underground station:

West Brompton on the District line – 2 minute walk from hotel.

Hotel check in / check out times

14:00 hrs / 12:00 hrs

Your Room

The Hotel Ibis Earls Court is a modern and comfortable hotel, which offers friendly and efficient service at value for money prices.

Room Features

- Coffee/tea making facilities
- Concierge
- Direct dial telephone
- Colour satellite television
- In house movies - pay per view
- Radio
- Hairdryer and trouser press are available in some bedrooms (request when you check-in)
- Laundry service
- Porters
- Air conditioned common areas
- Car rental
- Wi-fi access
- Car park

These rooms are Standard category, if you would like an upgrade to a different category of room, please note this in your booking form under Special requirements. All hotels are subject to availability.



Индивидуальные и групповые экскурсионные туры в Англию-Шотландию-Уэльс. Каникулярные образовательные программы для школьников и студентов. Корпоративные мероприятия в Лондоне и Шотландии. Футбольные туры на Королевскую Премьер Лигу Англии. Визовая поддержка в UK!

(495) 989-43-88, 979-31-39 • www.vikitravel.ru • visa@vikitravel.ru

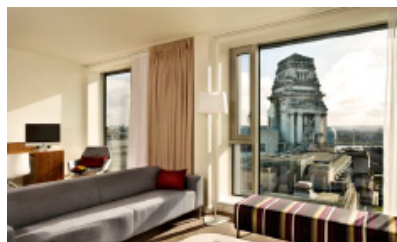
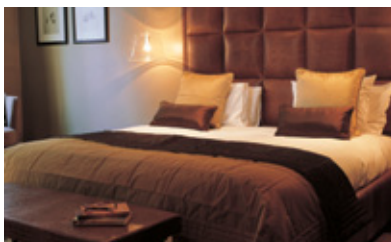




THE WIMBLEDON EXPERIENCE

HOTEL PRICE GUIDE

ВИКИТРЕВЕЛ +7 (495) 989-43-88 HOTEL@VIKITRAVEL.RU



HOTEL COMPARISON GUIDE 2013

Star Rating	3*	4*	4*	4* Deluxe	5*	5*
Hotel	Ibis	DoubleTree Tower of London	DoubleTree Westminster	Kensington Doyle	The Savoy	St.Pancras Renaissance
Wi-Fi	✓	✓	✓	✓	✓	✓
Room Type included	Standard	Standard	Standard Queen Bed	Superior	Superior	Barlow Standard
Doubles/ Queen/King Bed	Double as standard	TBC	King bed on request/ Availability only	King bed on request/ Availability only	King bed as standard	King bed on request/ Availability only
Air Conditioning in rooms	✗	✓	✓	✓	✓	✓
Gym Facilities	✗	✗	✗	✓	✓	✓
Swimming Pool	✗	✗	✗	✗	✓	✓
Closest Tube	West Brompton (0.3 miles)	Tower Hill (0.1 miles)	Pimlico (0.5 miles)	South Kensington (0.3 miles)	Charing Cross (0.2 miles)	Kings Cross (0 miles)
Time to Wimbledon via Tube Wimbledon	12 minutes	38 minutes	29 minutes	18 minutes	34 minutes	35 minutes

Please note that prices are in UK pounds and that any upgrades to other style rooms/suites are available for an extra charge. Information in this fact sheet is correct at the time of going to press however package, price and content are subject to change. (E&OE)



Индивидуальные и групповые экскурсионные туры в Англию-Шотландию-Уэльс. Каникулярные образовательные программы для школьников и студентов. Корпоративные мероприятия в Лондоне и Шотландии. Футбольные туры на Королевскую Премьер Лигу Англии. Визовая поддержка в UK!

(495) 989-43-88, 979-31-39 • www.vikitavel.ru • visa@vikitavel.ru





THE WIMBLEDON EXPERIENCE

EXTRAS

ВИКИТРЕВЕЛ +7 (495) 989-43-88 HOTEL@VIKITRAVEL.RU

Wimbledon 2013 Extras

Get a little something extra for 2013?



Wondering what to do during your stay in London? Are you finding everything is a little expensive? Even dining out can stretch your budget.

Keith Prowse is offering you all an extra special experience during your stay in London so that you can make the most of your time here. Including the following:

THE WIMBLEDON EXPERIENCE EXTRAS

It's the little things that count. Why not pre-order some of these extras to enhance your trip to The Championships:

Extra	Price per person
Afternoon Tea within The Wimbledon Experience	£18.00 inc VAT
Men's / Women's official Championship towel	£28.00 inc VAT
Upgrade from Baseline Tour to a full buffet within The Wimbledon Experience	£60.00 inc VAT
Upgrade to a full day's hospitality within The Gatsby Club	£190.00 inc VAT

WEST END THEATRE & DINNER

Why not take advantage of our theatre packages during your stay and let us plan your theatre experience. Our specially designed theatre package includes dinner at one of London's top restaurants and the best tickets available for a sell-out West End show of your choice. Prices start at £155 + VAT per person.

TRADITIONAL BRITISH EVENTS

The 2013 British sporting calendar is busy as ever, with various iconic English summer events taking place in and around The Championships. You could extend your stay and take in one of these typically British Events:

Cricket t20 - England v NZ at The Kia Oval 25 June
 Cricket ICC Semi Final at The Kia Oval 19 June
 Cricket ICC Final at Edgbaston 23 June
 Royal Ascot 18-22 June
 Henley Royal Regatta 3 July - 7 July
 Henley Festival 10-14 July
 British Grand Prix at Silverstone 5-7 July

EUROPE

How about extending your stay to see some of Europe? Take a trip to view the Eiffel Tower in Paris on the Eurostar or witness the stunning architecture, from the likes of Gaudi in Barcelona.



Индивидуальные и групповые экскурсионные туры в Англию-Шотландию-Уэльс. Каникулярные образовательные программы для школьников и студентов. Корпоративные мероприятия в Лондоне и Шотландии. Футбольные туры на Королевскую Премьер Лигу Англии. Визовая поддержка в UK!

(495) 989-43-88, 979-31-39 • www.vikitravel.ru • visa@vikitravel.ru





THE WIMBLEDON EXPERIENCE

TRAVEL INFORMATION

ВИКИТРЕВЕЛ +7 (495) 989-43-88 HOTEL@VIKITRAVEL.RU



TRAVEL INFORMATION

With any event, the build up of traffic around the venue can be quite heavy so please allow plenty of time for travel.

The Wimbledon Experience and The Gatsby Club are situated in the grounds of Wimbledon Lakeside Cricket Club. The entrance to which is opposite the main gates of The AELTC, located on Church Road, Wimbledon, South West London.

FREE SHUTTLE BUS

There is a complimentary shuttle bus from Southfields Underground Station which will transfer you to and from The Wimbledon Experience or the Gatsby Club. Look out for The Wimbledon Experience logo on the shuttle bus.

The complimentary service shuttle bus times are as follows:-

10.00am - 1.00pm

5.00pm - 7.00pm

Every day of the fortnight

Please note there will be no bus runs after these times. The buses run approximately every 15-20 minutes. Traffic can be bad with delays of over an hour and sometimes the option of walking is the quickest (approx 15 minute walk).

TRAINS

There is a frequent service between Waterloo and Wimbledon during The Championships. Travel time between the two is approximately 12 minutes.

UNDERGROUND

The nearest underground station is Southfields on the District Line. For further information on the London Underground please click below.

TRANSPORT FOR LONDON

The Transport for London website can help you with connections to and from Wimbledon;
www.tfl.gov.uk

TAXIS

The nearest taxi ranks are located outside the main gate of The AELTC and Southfields Underground Station.

USEFUL TRAVEL INFORMATION

The Wimbledon Experience Address
Wimbledon Cricket Club (Car Park 5)
Church Road
Wimbledon
SW19 5AG



Индивидуальные и групповые экскурсионные туры в Англию-Шотландию-Уэльс. Каникулярные образовательные программы для школьников и студентов. Корпоративные мероприятия в Лондоне и Шотландии. Футбольные туры на Королевскую Премьер Лигу Англии. Визовая поддержка в UK!

(495) 989-43-88, 979-31-39 • www.vikitravel.ru • visa@vikitravel.ru





THE WIMBLEDON EXPERIENCE

FAQ'S

ВИКИТРЕВЕЛ +7 (495) 989-43-88 HOTEL@VIKITRAVEL.RU



FREQUENTLY ASKED QUESTIONS

Q: How do I get my tickets?

A: Your documentation (Information Pack) will be made available for collection upon check-in to your hotel. This contains your full itinerary, Travelcards (for the days you are attending Wimbledon), event information and event card. You must bring this information pack to The Wimbledon Experience or The Gatsby Club where you will receive your reserved court ticket. Please note that The Wimbledon Experience will never send out tickets in the mail, for security reasons.

Q: How do I get from my hotel to The Wimbledon Experience / The Gatsby Club, Wimbledon?

A: The Wimbledon Experience provides you with a Travelcard on the Underground network. This is valid for travel after 09.30am until midnight anywhere in Zones 1-4 in London. Just find the nearest underground station to your hotel (ask your hotel concierge) and head to Southfields Underground Station on the District Line (Green Line on a Tube map).

Q: Where is The Wimbledon Experience and The Gatsby Club located?

A: The Wimbledon Experience is situated next to The Gatsby Club, in the grounds of Wimbledon Lakeside Cricket Club. The entrance is opposite gate 5 of The All England Lawn Tennis and Croquet Club on Church Road in Wimbledon, Southwest London. Follow the signs for Car Park 5.

Q: Where is the best place to meet my guests?

A: The best place to meet your guests is at the reception of The Wimbledon Experience or at your table in The Gatsby Club. Our hostesses will escort you and your guests to your table whenever you arrive.

Q: What are The Wimbledon Experience Opening

Hours?

A: The Wimbledon Experience will open at 10.30am and close at 2.30pm, reopening again at 4.00pm for Afternoon tea and closing at 7.00pm. Please note that Afternoon tea will need to be pre-ordered at least 5 days prior to your attendance.

Q: What are The Gatsby Club Opening Hours?

A: The Gatsby Club will open at 10.30am. The Gatsby Club will close at 7.00pm.

Q: Is The Wimbledon Experience Club buffet lunch included in every tour?

A: Buffet lunch is only included in The Championship Tour – it is not included in the Baseline Tour, however this is an upgrade option for £60 per person.

Lunch is served between 11.30am – 2.00pm (no admittance after this time).

Q: Can I purchase Afternoon tea?

A: Afternoon tea MUST be pre-ordered and paid for prior to your arrival at The Wimbledon Experience. This can be done at the time of booking or by contacting your sales person who will add this onto your online booking. Afternoon tea will be served daily from 4.00pm - 6.00pm within The Wimbledon Experience and costs £18 per person

Q: Can I watch matches on Centre Court and Court 1?

A: Unfortunately not. Packages are purchased for specific courts at the time of booking. That said, if you wish to purchase Centre Court tickets for half of your party and the other half for Number 1 Court, you will be covered!



Индивидуальные и групповые экскурсионные туры в Англию-Шотландию-Уэльс. Каникулярные образовательные программы для школьников и студентов. Корпоративные мероприятия в Лондоне и Шотландии. Футбольные туры на Королевскую Премьер Лигу Англии. Визовая поддержка в UK!

(495) 989-43-88, 979-31-39 • www.vikitravel.ru • visa@vikitravel.ru





THE WIMBLEDON EXPERIENCE

FAQ'S

ВИКИТРЕВЕЛ +7 (495) 989-43-88 HOTEL@VIKITRAVEL.RU



FREQUENTLY ASKED QUESTIONS

Q: When does play start?

A: The gates to Wimbledon open from 10.30am daily and remain open until one hour after close of play. Play is scheduled at 11.30am on Courts 2-19 for the first eight days. Play on Centre and No. 1 Court begins at 1.00pm each day with the exception of the Ladies and Men's Singles Finals where play will start at 2.00pm. Matches will continue until the day's schedule is completed or light stops play (approximately 8:30 p.m). With the use of the roof on Centre Court however, play can continue as late as 11pm.

Q: What is the dress code?

A: Dress code in The Wimbledon Experience is informal. Dress code in The Gatsby Club is smart/casual. No jeans, no tennis shoes, no sandals, no shorts, no caps, no flip flops.

Q: Are there any Taxi's around?

A: The nearest taxi ranks are located outside the main gate of The AELTC and Southfields Underground Station. Please note a taxi without a yellow light on is already occupied.

Q: Can I book transfers to / from the airport / hotel?

A: We can provide you with transfers to / from the airport and also to / from The Championships. If you wish to book then please contact your sales person. For prices see page 17 of this event guide.

Q: Do you sell ground passes?

A: We do not sell ground passes for The Championships, Wimbledon.

Q: What is the accommodation like in London?

A: The London hotels we have chosen are very handy to Wimbledon. All our hotels are located in central London, ideal if you like shopping on Bond

Street, visiting Harrods, the Museums and the London Eye.

Please note: room sizes in London hotels are small; you will have less space in the wardrobe, smaller beds and a smaller living area. Standard hotel rooms in London have one double bed or 2 twin (single) beds. We do recommend that you upgrade to a superior 4 star and deluxe 5 star properties, if you require additional space.

Q: Can I leave my suitcase / luggage in The Wimbledon Experience and / or The Gatsby Club?

A: There are no left luggage facilities inside the ground, however, there are a number of locations outside the ground.

Q: Can I book additional room nights through you?

A: You can book additional nights with us at any of the hotels we offer. These can be added at the time of booking or added at a later date by contacting your sales person. Please see our hotels page for more details

Q: Will I receive any information at my hotel?

A: You will receive a hotel pack on arrival, which will include your event card to gain access to the facility along with a museum voucher and Travelcards for the days you are attending the tennis. This will be exchanged at The Wimbledon Experience or The Gatsby Club for your court ticket.

Q: What information do I need to provide when I book?

A: At the time of booking we require the names of the guests who are attending; this is for the hotel as well as for your court tickets to The Championships. We also require your arrival night along with the room type you require (single/double / twin - single rooms will be subject to a



Индивидуальные и групповые экскурсионные туры в Англию-Шотландию-Уэльс. Каникулярные образовательные программы для школьников и студентов. Корпоративные мероприятия в Лондоне и Шотландии. Футбольные туры на Королевскую Премьер Лигу Англии. Визовая поддержка в UK!

(495) 989-43-88, 979-31-39 • www.vikitravel.ru • visa@vikitravel.ru





THE WIMBLEDON EXPERIENCE

CANCELLATION PROTECTION

Due to the Financial Services Authority (FSA) regulations, which came into force on 15 January 2005, we are no longer allowed to offer our customers "Insurance".

With effect from 15 January 2005 our standard Terms and Conditions offer "No Refunds" (see clause 21 of our Terms and Conditions).

We can, however, offer the customer a full refund if the event is cancelled or postponed, upon payment of an additional charge to invoke our Cancellation Protection Terms and Conditions.

Our Wimbledon Championships Cancellation Protection offers a 100% refund of your package price, if:

- The event is cancelled or postponed for reasons listed in our terms and conditions
- The event is cancelled or postponed due to an Act or Threat of Terrorism as detailed in our terms and conditions

Should you choose not to protect the whole package as above, then in the event of less than one hour's play you will be covered by the Official Wimbledon Wet Weather policy detailed on your match tickets.

Please note that we have no control whatsoever over decisions made by the AELTC, as to scheduling of matches either on the day, or deferred to another day, and therefore cannot be held responsible for any liability arising from their decisions.

Please contact the Operations department for the full terms and conditions.

*Packages to the value of	Centre Court
To £300	£9.00
£301 - £425	£12.00
£426 - £625	£17.50
£626 - £850	£24.00
£851 - £1275	£36.00
£1276 - £1700	£48.00
over £1700	£53.00

WIMBLEDON WET WEATHER POLICY

Details of the Raincheck policy introduced in 2001 are as follows and apply to all 13 scheduled days of The Championships, including the final Sunday.

If you do not purchase the Cancellation Protection we offer, then you will be able to claim the following if applicable

- If there is less than one hour's play because of rain on the court, the original purchasers of the tickets for that court, on that day will be refunded with the face value of those tickets
- If there is more than one hour's play, but less than two hours' play, refunds will be limited to half the face value on the ticket
- The Referee's decision on how much play has been achieved will be final
- Only the original purchasers are eligible for refunds under this policy
- Refunds will be paid automatically; please do not contact the AELTC
- Separate terms and conditions apply a) to Debenture Holders as notified by The All England Lawn Tennis Ground plc and b) to any extra days of play.

If there is any play on Monday 8 July and days following, admission will be via the turnstiles on a first come, first served basis. Sunday, 7 July tickets will not be valid on Monday 8 July. Full details of the Order of Play and entrance conditions will be announced by the AELTC at the earliest opportunity.

Please note that in the event of any curtailment or cancellation of play, due to any cause other than rain, it is regretted that no refund of money can be made.

Subject to change by The All England Lawn Tennis Club ("AELTC").



Индивидуальные и групповые экскурсионные туры в Англию-Шотландию-Уэльс. Каникулярные образовательные программы для школьников и студентов. Корпоративные мероприятия в Лондоне и Шотландии. Футбольные туры на Королевскую Премьер Лигу Англии. Визовая поддержка в УК!

(495) 989-43-88, 979-31-39 • www.vikitravel.ru • visa@vikitravel.ru

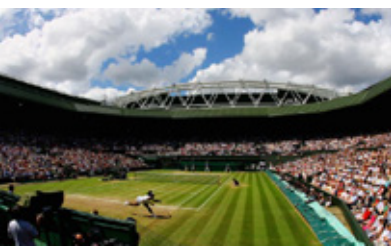




THE WIMBLEDON EXPERIENCE

WIMBLEDON FACTS

ВИКИТРЕВЕЛ +7 (495) 989-43-88 HOTEL@VIKITRAVEL.RU



2012 FACTS

KEY MATCH STATISTICS:

2012 Men's Champion: Roger Federer (SUI)
2012 Runner Up: Andy Murray (GBR)
Match result: 6-4, 6-1, 1-6, 6-3
Time taken: 3hrs 58mins
Prize Money: £1.15 Million

Fastest Serve in 2012

Men: Jo-Wilfried Tsonga - 140 mph

Women: Sabine Lisicki/Serena Williams - 120 mph

Attendance in 2012

Wimbledon 2012 was the 126th staging of The Championships at The AELTC since the first tournament in 1877.

The total attendance figure for the 13 days of The Championships was 484,805.

KEY MATCH STATISTICS:

2012 Women's Champion: Serena Williams (CZE)
2012 Runner Up: Agnieszka Radwanska (POL)
Match result: 6-1, 5-7, 6-2
Time taken: 2hrs 24mins
Prize Money: £1.15 Million

Strawberries & Cream

Last year, 28 tonnes of strawberries were delivered to the All England Lawn Tennis Club. When laid end-to-end, these berries would stretch 37 miles (for example from Wimbledon to Reading). A slippery slope when you include 7,000 litres of fresh cream racked up each fortnight.

String Theory

At least 40 miles worth of string are fitted to rackets over a fortnight at Wimbledon. That's just under six laps of the Centre Court.



Индивидуальные и групповые экскурсионные туры в Англию-Шотландию-Уэльс. Каникулярные образовательные программы для школьников и студентов. Корпоративные мероприятия в Лондоне и Шотландии. Футбольные туры на Королевскую Премьер Лигу Англии. Визовая поддержка в UK!

(495) 989-43-88, 979-31-39 • www.vikitravel.ru • visa@vikitravel.ru

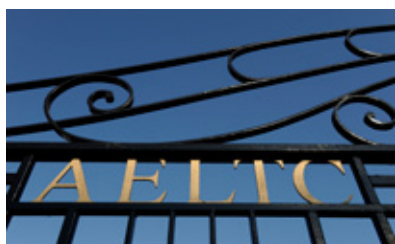




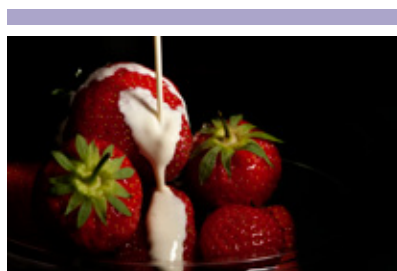
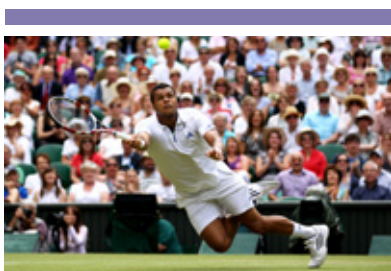
THE WIMBLEDON EXPERIENCE

MAPS OF COURTS

ВИКИТРЕВЕЛ +7 (495) 989-43-88 HOTEL@VIKITRAVEL.RU



MAPS OF CENTRE COURT, NO.1 COURT AND NO.2 COURT



Индивидуальные и групповые экскурсионные туры в Англию-Шотландию-Уэльс. Каникулярные образовательные программы для школьников и студентов. Корпоративные мероприятия в Лондоне и Шотландии. Футбольные туры на Королевскую Премьер Лигу Англии. Визовая поддержка в UK!
(495) 989-43-88, 979-31-39 • www.vikitravel.ru • visa@vikitravel.ru

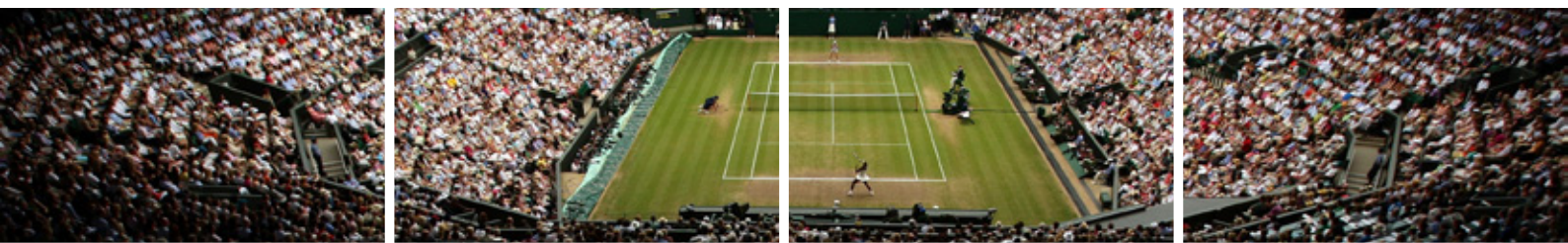




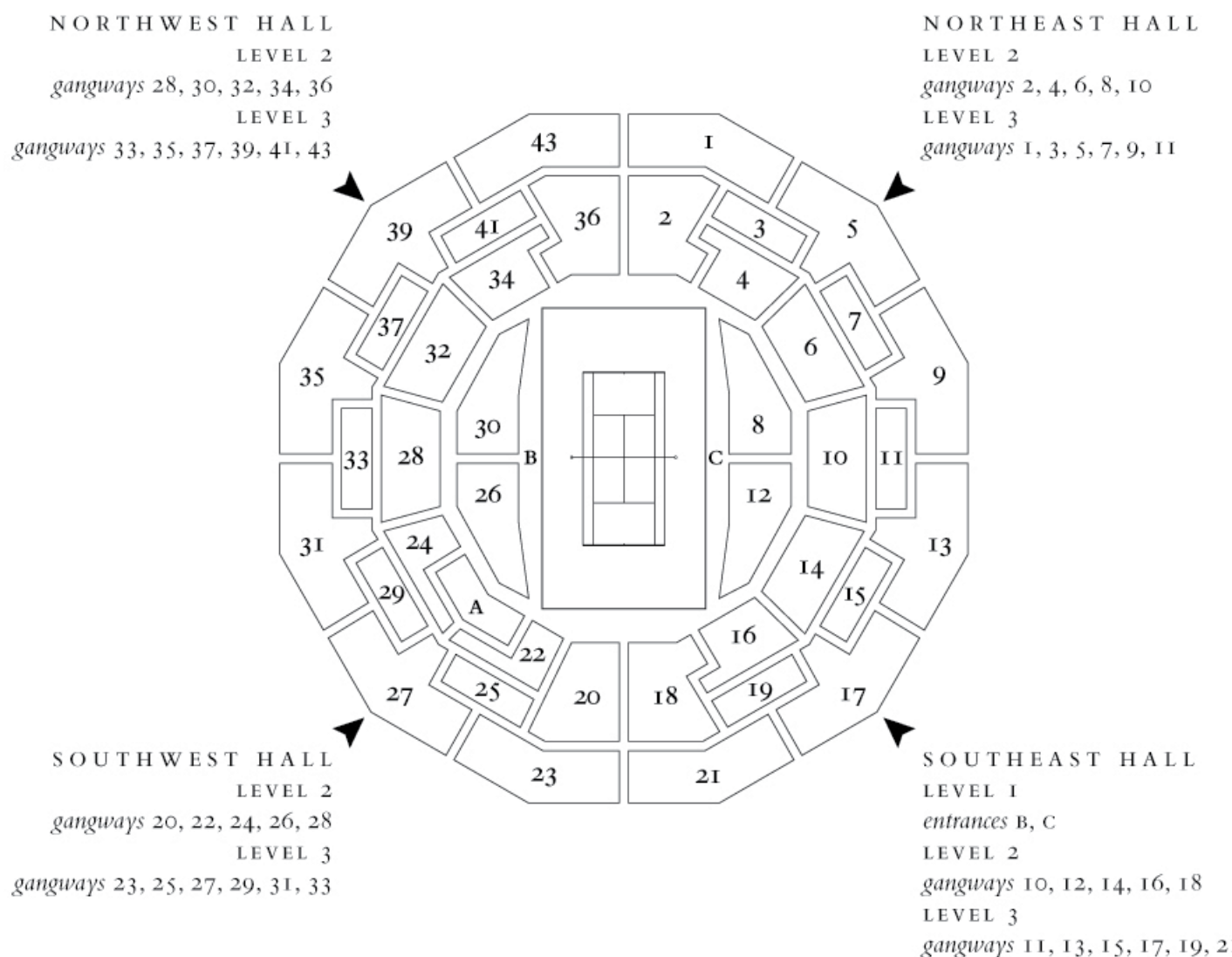
THE WIMBLEDON EXPERIENCE

NO. 1 COURT MAP

ВИКИТРЕВЕЛ +7 (495) 989-43-88 HOTEL@VIKITRAVEL.RU



NO.1 COURT MAP



Индивидуальные и групповые экскурсионные туры в Англию-Шотландию-Уэльс. Каникулярные образовательные программы для школьников и студентов. Корпоративные мероприятия в Лондоне и Шотландии. Футбольные туры на Королевскую Премьер Лигу Англии. Визовая поддержка в UK!

(495) 989-43-88, 979-31-39 • www.vikitravel.ru • visa@vikitravel.ru

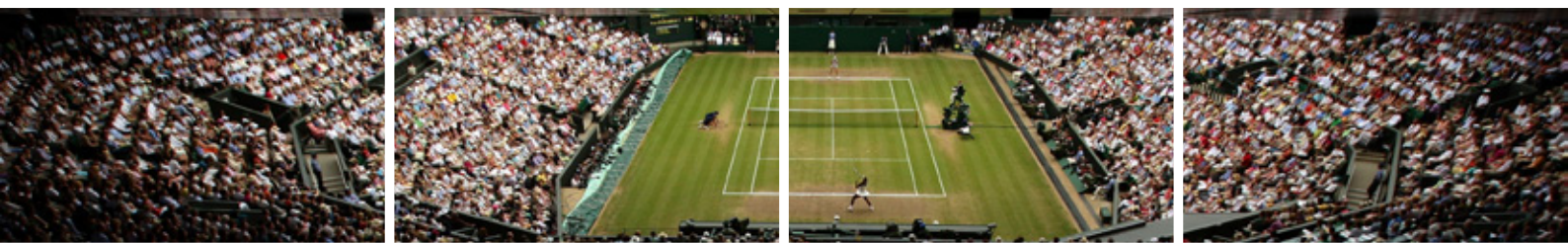




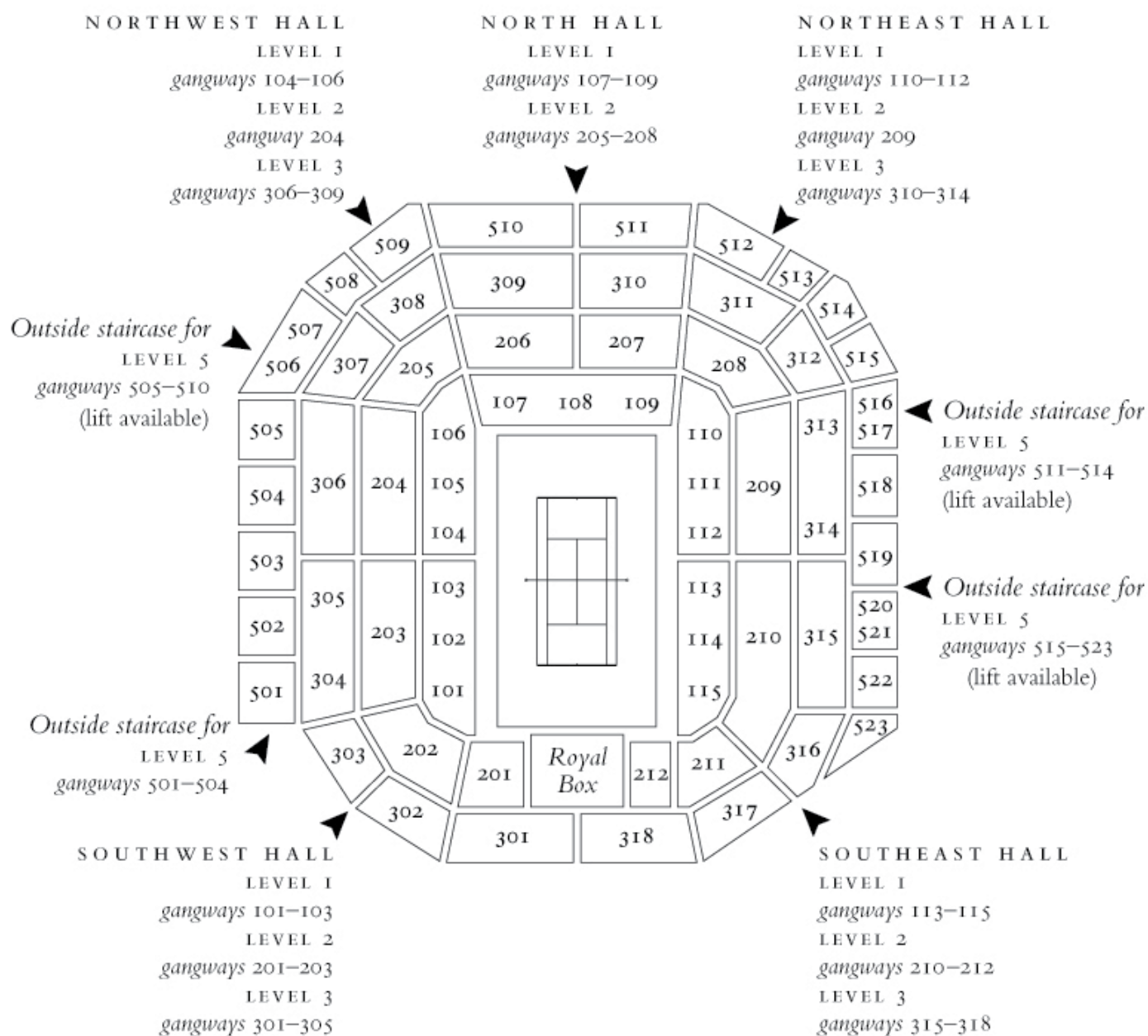
THE WIMBLEDON EXPERIENCE

CENTRE COURT MAP

ВИКИТРЕВЕЛ +7 (495) 989-43-88 HOTEL@VIKITRAVEL.RU



CENTRE COURT MAP



Индивидуальные и групповые экскурсионные туры в Англию-Шотландию-Уэльс. Каникулярные образовательные программы для школьников и студентов. Корпоративные мероприятия в Лондоне и Шотландии. Футбольные туры на Королевскую Премьер Лигу Англии. Визовая поддержка в UK!

(495) 989-43-88, 979-31-39 • www.vikitravel.ru • visa@vikitravel.ru

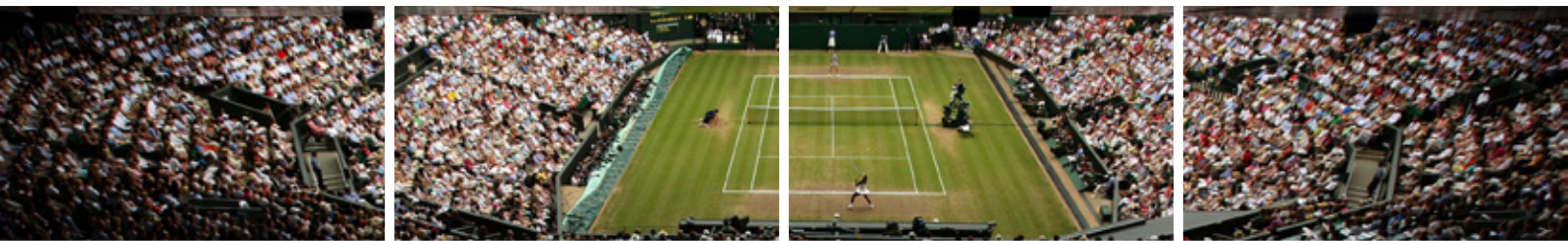




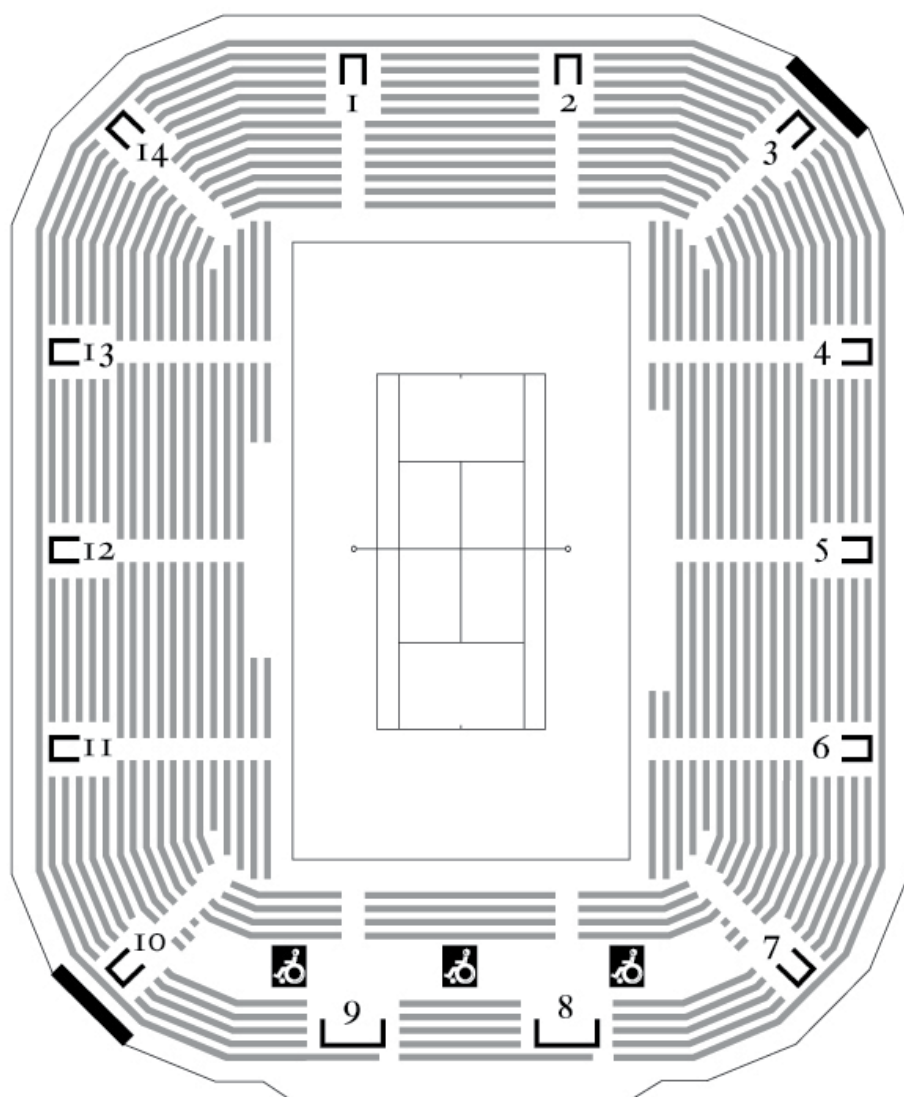
THE WIMBLEDON EXPERIENCE

NO. 2 COURT MAP

ВИКИТРЕВЕЛ +7 (495) 989-43-88 HOTEL@VIKITRAVEL.RU



NO. 2 COURT MAP



▲ North toward
CENTRE COURT

*The gangways:
numbered 1–14*

The seats:

East and West sides:

A (front row) to S (back row)

North and South ends:

F (front row) to S (back row)

*Row N is closest to
the entrance gangways*

► East toward
CHURCH ROAD



Индивидуальные и групповые экскурсионные туры в Англию-Шотландию-Уэльс. Каникулярные образовательные программы для школьников и студентов. Корпоративные мероприятия в Лондоне и Шотландии. Футбольные туры на Королевскую Премьер Лигу Англии. Визовая поддержка в UK!

(495) 989-43-88, 979-31-39 • www.vikitravel.ru • visa@vikitravel.ru

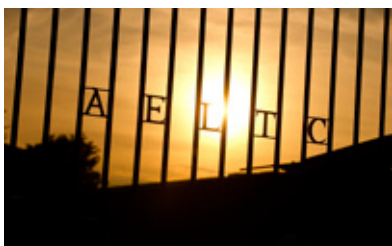




THE WIMBLEDON EXPERIENCE

A- Z OF WIMBLEDON

ВИКИТРЕВЕЛ +7 (495) 989-43-88 HOTEL@VIKITRAVEL.RU



A - Z OF WIMBLEDON

AA Office

In Car Park 4, off Somerset Road inside Gate 20.

Autograph Island

Interviews and signing sessions with top players is near the Aorangi Pavilion.

Babies

For safety reasons the Club recommends that babies should not be brought to The Championships (see also 'Children' below). However, if babies are brought into the Grounds they will not be allowed into the show courts and should remain silent during play on other courts. A limited number of baby changing facilities are available but there are no facilities for mothers to 'express milk'.

Bank (HSBC)

Situated just to the north of Gate 3 and open each day of The Championships from Ground opening to 8pm. Automatic till machines are also available in the Bank, in the North Concourse and outside Gate 1.

Bicycles

Public bicycle racks are available for free, at the owner's risk, in Car Parks 6 and 8. Bicycles left in other areas will be removed by the Police.

Children

Children under the age of 12 must be accompanied by an adult. For safety reasons babes in arms and pushchairs should not be brought into the grounds and, in any case, will not be allowed into show courts.

Cushions

May be hired at £3.00 per day; souvenir cushions are available at £7.00. A luxury souvenir cushion is also available at £15. These are available from cushion hire kiosks around the grounds.

Drinking water

There are numerous drinking water fountains located around the grounds.

First Aid posts

The St John Ambulance Brigade runs three First Aid posts.

Information desks

A wide variety of information is available from six points around the grounds.

Lawn Tennis Association

Details of membership (British Tennis Membership), literature and other information are available from the British Tennis Information Area in No.1 Court (Level 1) near Gate 3.



Индивидуальные и групповые экскурсионные туры в Англию-Шотландию-Уэльс. Каникулярные образовательные программы для школьников и студентов. Корпоративные мероприятия в Лондоне и Шотландии. Футбольные туры на Королевскую Премьер Лигу Англии. Визовая поддержка в УК!

(495) 989-43-88, 979-31-39 • www.vikitravel.ru • visa@vikitravel.ru

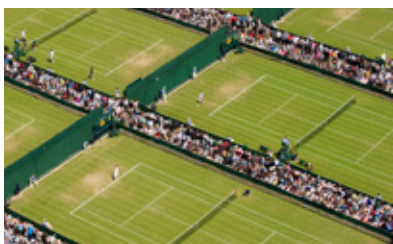
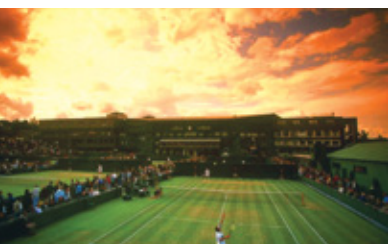




THE WIMBLEDON EXPERIENCE

A- Z OF WIMBLEDON

ВИКИТРЕВЕЛ +7 (495) 989-43-88 HOTEL@VIKITRAVEL.RU



A - Z OF WIMBLEDON

Left Luggage

Left luggage facilities are provided at a number of locations OUTSIDE the grounds. Camping equipment, oversize bags, picnic hampers and other prohibited items or bags not required during your visit to The Championships must be left at one of these facilities. In the interests of security and the safety of all our visitors, there are no left luggage facilities inside the grounds, so please leave any luggage at your hotel.

Security

In the interests of security, The AELTC reserves the right to search bags, vehicles and the person as a condition of entry to the Grounds. ONE BAG ONLY PER PERSON WILL BE ALLOWED and this bag must measure no more than 18" x 12" x 12" (45cm x 30cm x 30cm). Furthermore, NO HARD-SIDED ITEMS (e.g.: picnic hampers, cool boxes or briefcases) OF ANY SIZE WILL BE ALLOWED INTO THE GROUNDS. Do not leave packages unattended at any time.

Shopping

The Wimbledon Shops, in the Centre Court and No.1 Court stadiums, between Gates 3 and 4, to the south of Court 13 and in kiosks around the grounds, stock all official Wimbledon merchandise and a wide range of gifts and souvenirs. The funds generated contribute towards the further development of lawn tennis in Great Britain.

Show Courts

Centre Court, No.1 Court and Courts 2, 3, 13 & 18 are defined as the 'show courts'.

Speed of service net

Try your service compared with the professionals (proceeds to charity).

Telephones

Located inside the grounds near Gates 4, 13 and in the No.1 Court stadium, outside the grounds near Gate 9 and in Marryat Road.

Television screen

A giant television screen shows current matches and tennis information to all areas of the Aorangi Terrace.

Transport — Buses

Buses for Wimbledon station leave from Somerset Road, by Gate 11. Buses for Southfields station leave from the terminal near Gate 1 on Church Road.

Transport — Underground

The nearest underground stations are Southfields (to the north; approx. 15 minute walk) and Wimbledon (to the south; approx. 20 minute walk); both on the District Line.

Transport — Taxis

Northbound taxis leave from Church Road outside Gate 4. Southbound taxis leave from Somerset Road outside Gate 13.



Индивидуальные и групповые экскурсионные туры в Англию-Шотландию-Уэльс. Каникулярные образовательные программы для школьников и студентов. Корпоративные мероприятия в Лондоне и Шотландии. Футбольные туры на Королевскую Премьер Лигу Англии. Визовая поддержка в UK!

(495) 989-43-88, 979-31-39 • www.vikitravel.ru • visa@vikitravel.ru

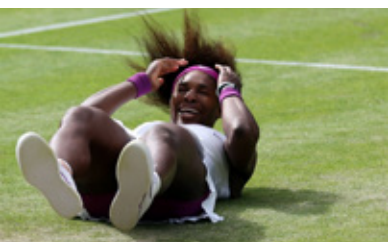




THE WIMBLEDON EXPERIENCE

A- Z OF WIMBLEDON

ВИКИТРЕВЕЛ +7 (495) 989-43-88 HOTEL@VIKITRAVEL.RU



A - Z OF WIMBLEDON

Transport — Train

Many long distance trains — including services from Waterloo — call at Wimbledon Station. From there it is approx. a 20 min walk, or a five minute bus ride to the grounds.

Transport — Tram

Tram link runs regularly between Croydon and suburbs to Wimbledon Station.

Weather

All visitors to The Championships are reminded to take the appropriate measures for protection of the skin against the sun. You may be in sunlight for long periods when the use of sunscreens and protective hats and clothes is essential. However, even on warm days it may be cooler in the covered and/or shaded areas of the stands in Centre and No.1 Courts and an extra layer of clothing may be required.

Wimbledon Village

A short walk from The Championships and you will discover an excellent selection of restaurants and public houses together with many specialist and exclusive shops.

Wheelchairs

A special map/information leaflet is available at all gates. The recommended routes are shown on the plan. Wheelchairs may only be taken into designated positions in the show courts.



Индивидуальные и групповые экскурсионные туры в Англию-Шотландию-Уэльс. Каникулярные образовательные программы для школьников и студентов. Корпоративные мероприятия в Лондоне и Шотландии. Футбольные туры на Королевскую Премьер Лигу Англии. Визовая поддержка в UK!

(495) 989-43-88, 979-31-39 • www.vikitravel.ru • visa@vikitravel.ru





THE WIMBLEDON EXPERIENCE

A- Z OF WIMBLEDON

ВИКИТРЕВЕЛ +7 (495) 989-43-88 HOTEL@VIKITRAVEL.RU



We hope that this guide
has proved useful to you.

Should you have any further
questions at this stage, please do
not hesitate to call.

**We look forward to welcoming you
to Wimbledon in the summer!**

Sales: 0845 602 8900
Operations: 0845 602 8903
www.keithprowse.co.uk



Индивидуальные и групповые экскурсионные туры в Англию-Шотландию-Уэльс. Каникулярные образовательные программы для школьников и студентов. Корпоративные мероприятия в Лондоне и Шотландии. Футбольные туры на Королевскую Премьер Лигу Англии. Визовая поддержка в UK!

(495) 989-43-88, 979-31-39 • www.vikitavel.ru • visa@vikitavel.ru





THE WIMBLEDON EXPERIENCE

A- Z OF WIMBLEDON

ВИКИТРЕВЕЛ +7 (495) 989-43-88 HOTEL@VIKITRAVEL.RU



We hope that this guide
has proved useful to you.

Should you have any further
questions at this stage, please do
not hesitate to call.

We look forward to welcoming you
to Wimbledon in the summer!



ВИКИТРЕВЕЛ

(495) 989-43-88, 979-31-39 • www.vikitavel.ru

Туроператор по Великобритании. Обучение за рубежом.
Деловой туризм. Визы в UK.



Индивидуальные и групповые экскурсионные туры в Англию-Шотландию-Уэльс. Каникулярные образовательные программы для школьников и студентов. Корпоративные мероприятия в Лондоне и Шотландии. Футбольные туры на Королевскую Премьер Лигу Англии. Визовая поддержка в UK!

(495) 989-43-88, 979-31-39 • www.vikitavel.ru • visa@vikitavel.ru

